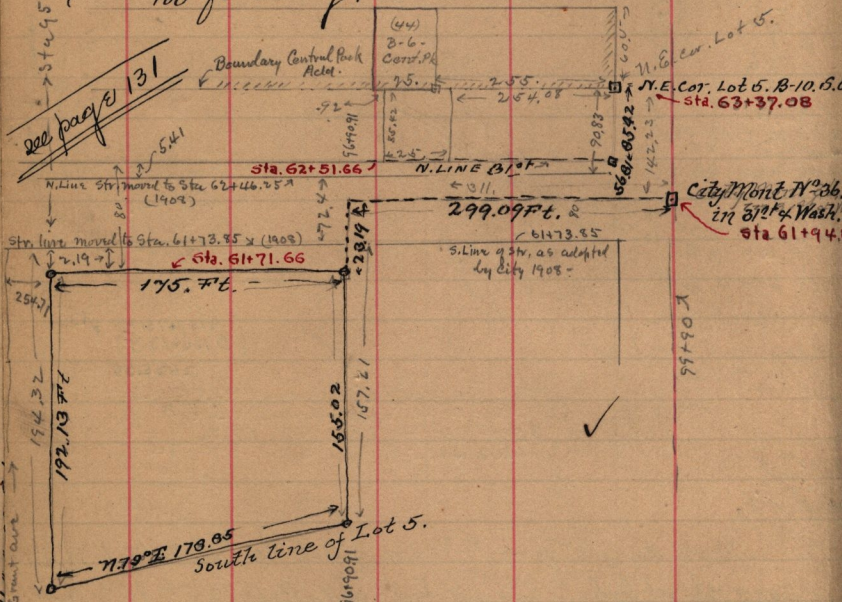


Mar. 26-1892

Copy, of abstract, furnished by W.W. McDonald
Part of Lot 5, B-10, South Ogden Survey
Beg. 165.42 ft S. and 243.09 ft W. of N.E. cor of
said Lot, — N 175. ft. S 197. 1/3 ft. to S. line of
said Lot 5, N 79° E 178.85 ft to pt S. of beg.
N 156.02/100 ft to beg. see sketch below.



see page 131

City Mont N° 26
in Dist. Wash.
Sta 61+94.8

also Lot 44-B-6-Central Parks Add. also,
Beg. 254.08 ft W. from N.E. cor Lot 5-B-10. S.O.S.
N, 25. ft S 85.42 ft E 25. ft N 85.42 ft to
Last lot owned by W.W. McDonald